

OUR BUSINESS SECTORS:

- MEASURE AND AGEING MACHINES
- ASSEMBLY AND MACHINING EQUIPMENT
- SUBCONTRACTING
- AUTOMATION UNITS

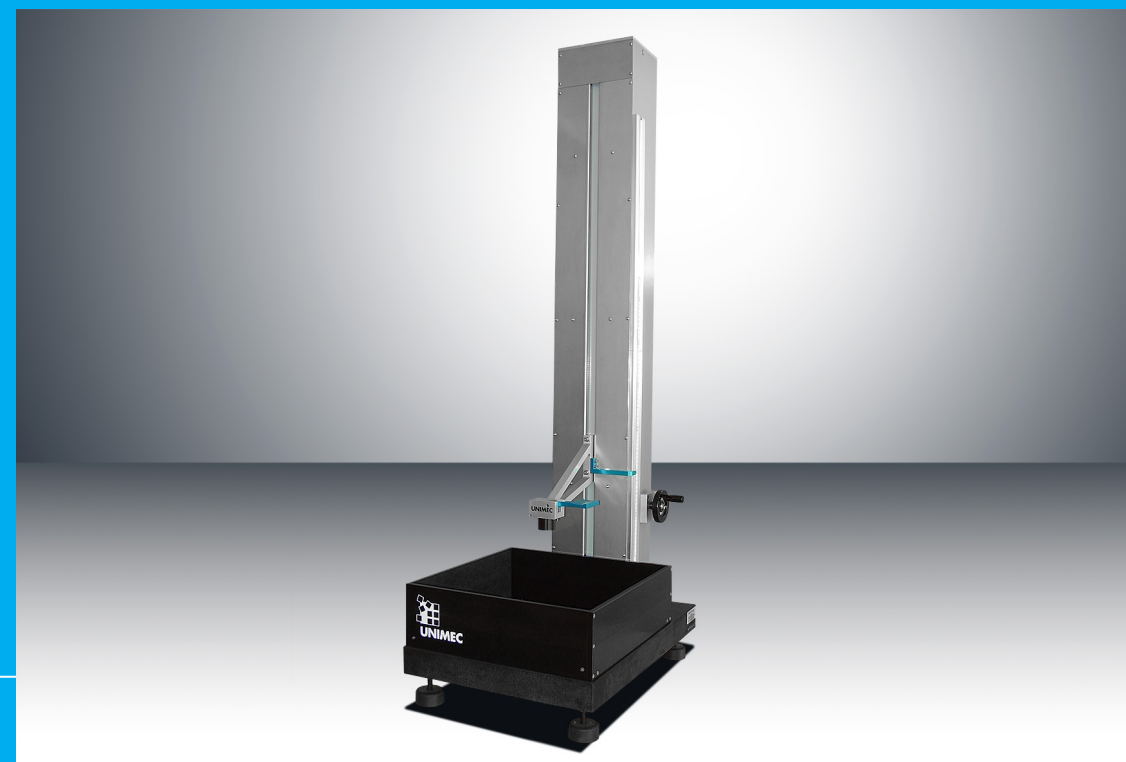


Watch the video of the
product on the Internet



GlaceTest

TEST FOR WATCH GLASS RUPTURE



GlanceTest



■ Equipment

• This machine enables to test rupture of watch glass by drop of a steel ball. It respects the NIHS 61-13 and ISO 14368-3 standards. This equipment is assembled on a marble plate in order to ensure the sock's hardness.

■ Manual

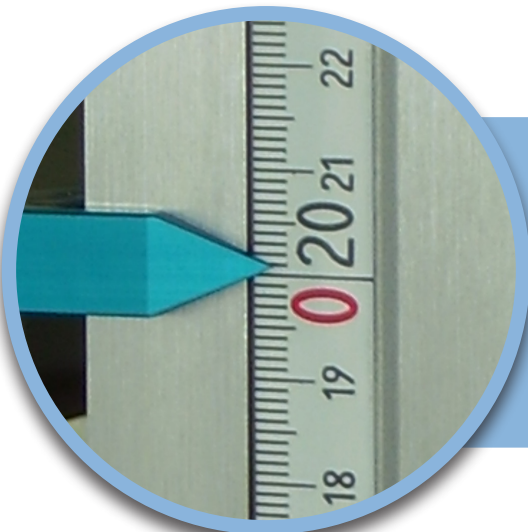
• This equipment does not need any electric or pneumatic connection.

■ Drop

• Drop height is indicated to the user with a ruler. It is adjustable from 50 to 1000 mm.

■ Protection

• A delrin tray, covered with a shock-absorbing mat prevent all undesired shocks between the ball and the granite basis.



■ Adjustable ruler

Possibility to reference the zero point of drop on the glass top, whatever its position.

Technical data

Drop height	from 50 to 1 000 mm
Reference zero point	Ajdustable
Type of ball	Steel - ø 25 mm - 63.5 grammes
Dimensions	430 x 590 x 1 408 (l x d x h)
Weight	70 kg