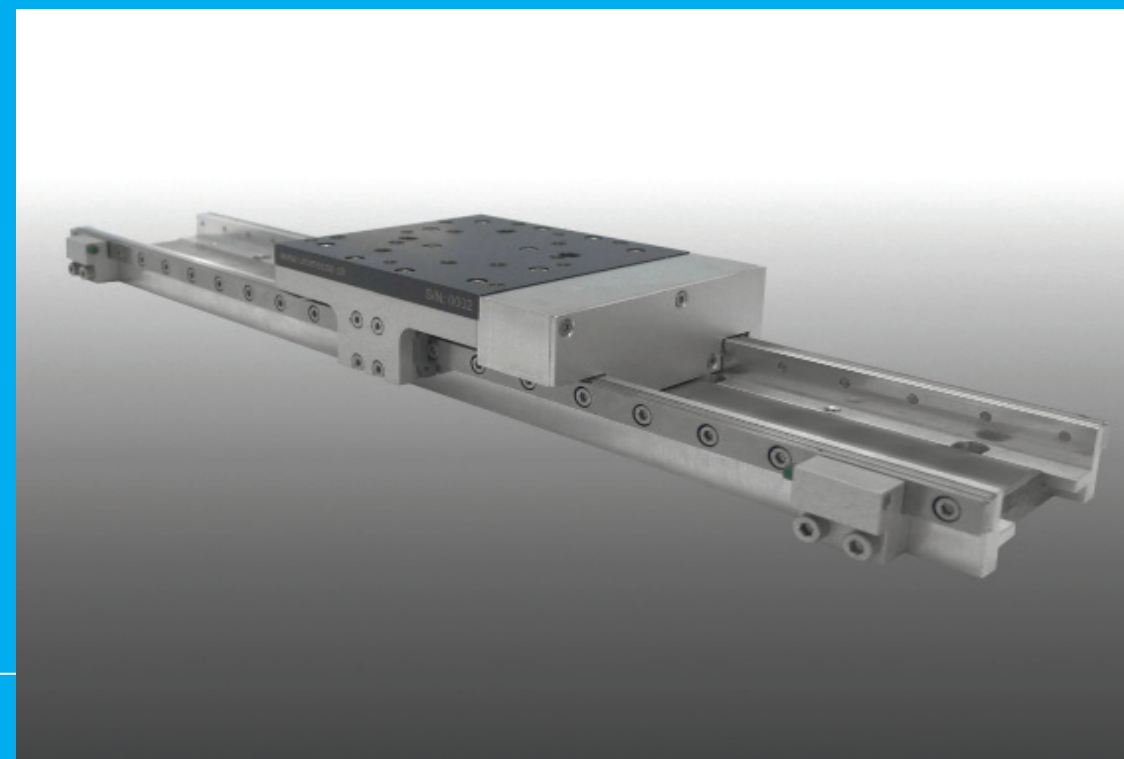


## OUR BUSINESS SECTORS:

- MEASURING AND AGEING MACHINES
- ASSEMBLY AND MACHINING EQUIPMENT
- SUBCONTRACTING
- AUTOMATION UNITS

# AML68

LINEAR AXIS WITH LINEAR MOTOR



# AML68

LINEAR AXIS WITH LINEAR MOTEUR

## Module

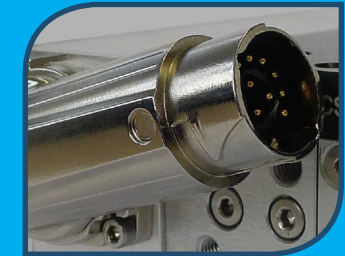
- Specifically developed for challenging applications, the AML68 ensures dynamism, precision, power, rigidity and long life.
- Compact, the AML68 is easy to insert in the most difficult places.
- An additional asset , its stroke from 60mm to 1200mm.
- Associated with a servo drive Uni-Drive 4805-010, the unit is easy and quick to integrate.

## Absolute encoder and optical scale

- Positioning precision, repeatability and stability are performed by an absolute encoder and a new generation of optical scale.

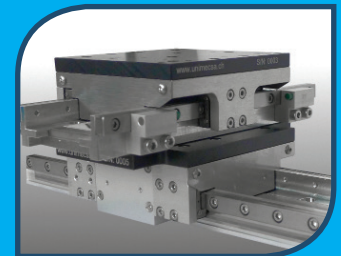
## A connection, two options

- The connection is over-moulded on the motor.
- The connection is made by a single cable and a rotatable connector.



## Options

- Built-in end stops on the module or deported to the customer application.
- XY table assembly without adaptor plate.
- Stroke according to customer's request up to 1200mm.



## Uni-Drive 4805-010

Perfectly adapted to the AML68, this servo-drive meets all your needs :

- **Digitals I/O** : settable by the user.
- **Field bus** : the AML68 is controlled via an external interface (Eternet TCP, RS485).
- **Analog input** : it allows, for example, the integration of a force sensor, torque sensor, etc.



## Comissioning

- A commissioning software supplied with the control unit enables the parameters to be set easily and quickly.

Technical data	AML68/60	AML68 /100	AML68/220	AML68/300	AML68/700
Stroke (standard)	60 mm	100 mm	220 mm	300 mm	700 mm
Total length	175 mm	215 mm	335 mm	415 mm	815 mm
Width / Height	93/44 mm				
Nominal force	68 N				
Peak force	204 N				
Slider weight	1.04 Kg				
Positioning resolution	+/-50nm				