

## OUR BUSINESS SECTORS:

- MEASURING AND AGEING MACHINES
- ASSEMBLY AND MACHINING EQUIPMENT
- SUBCONTRACTING
- AUTOMATION UNITS

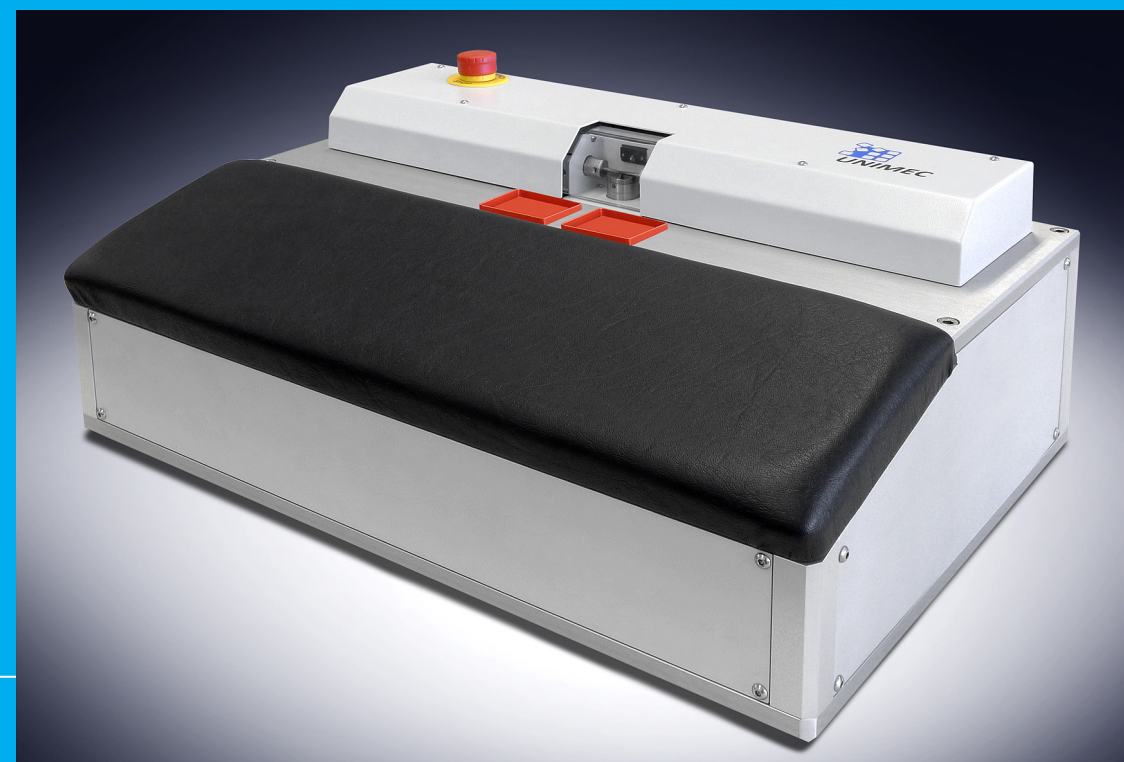


Watch video of the  
product on the Internet



# Indenting machine

INDENTING MACHINE FOR CANNON-PINIONS



# Indenting machine



## ■ *Equipment*

- This equipment is used to adjust cannon-pinion on center-arbor by deformation. This automatic or semi-automatic work station replaces former manual or semi-manual work techniques.

## ■ *Interface software*

- Software interface developed for this equipment allows to efficiently and easily adjust height and depth of indenting. It also allows to analyse deformation of the material with a force/position curve.

## ■ *Height of indenting*

- Height of indenting is adjustable and motorised.

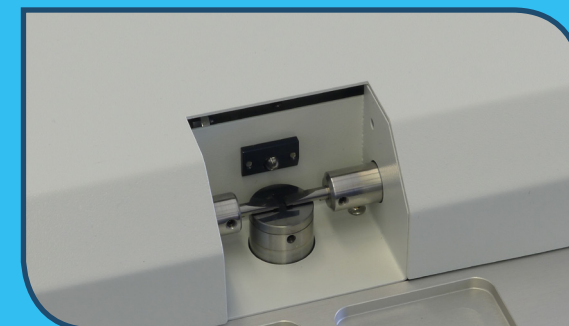
## ■ *Repeatability*

- This equipment offers quality and precision, and also repeatability of indenting.



## ■ *Simplicity of use*

- This machine stands out by its simplicity of use and ease of devices loading.



## ■ *Force sensor*

The operation is made by two perfectly aligned carbide blades. A 500 N force sensor ensures indenting force and penetration quality into cannon-pinion.

## Technical data

Sensor capacity	from 0 to 500 N
Repeatability	+/- 2 $\mu$
Positioning precision Z Axis	0,01 mm
Dimensions	500 x 340 x 216 (l x d x h)
Weight	31 kg

