

## OUR BUSINESS SECTORS:

- MEASURING AND AGEING MACHINES
- ASSEMBLY AND MACHINING EQUIPMENT
- SUBCONTRACTING
- AUTOMATION UNITS

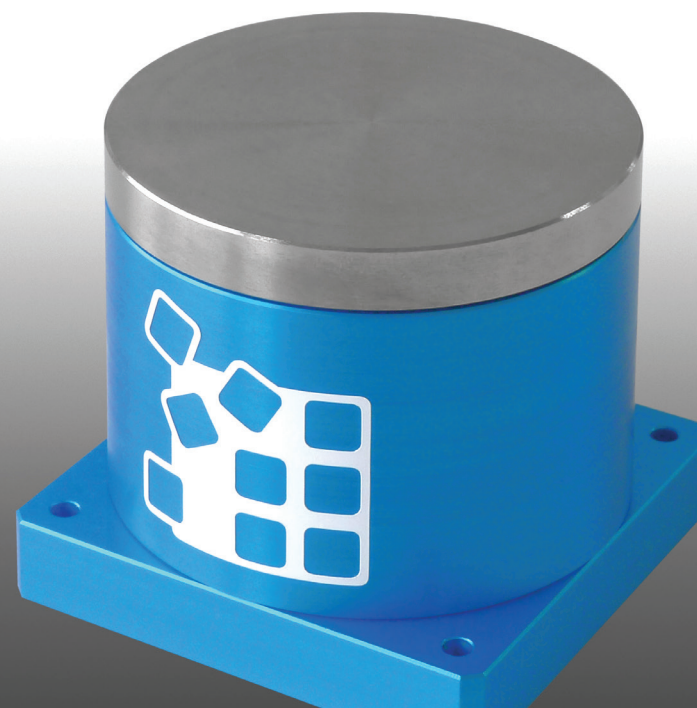


Watch video of the  
product on the Internet



# TE66 / TE66H

ELECTRICAL ROTARY TABLE



# TE66 / TE66H

Electrical rotary table



## Equipment

- The new generation rotary table TE66, fully electric, combines precision, repeatability, working rate and flexibility of use.
- Functioning according to positions :
  - 16 programmable positions + rest position in standard mode.
  - No limit to the number of positions in extended mode.
- Incremental mode: Rotating the table by a desired number of steps from a defined starting position at a defined angle.

## Repeatability and high working rate

- The TE66 rotary table is characterised by its repeatability, positioning accuracy and high working rate. This module offers an efficient answer to your transport, assembly and parts handling needs.



## UNIDRIVE 4805

In order to achieve excellent repeatability, Unimec has developed its own control-unit. With the UNIDRIVE 4805, the TE66 rotary table can be operated in different ways:

- **Standard mode:** the table is controlled by a PLC or an external PC via digital inputs and outputs.
- **Advanced mode:** The module is controlled via an external interface (Eternet TCP). It is possible to realise more complex cycles while maintaining flexibility, repeatability and precision.

## Commissioning

- A commissioning software supplied with the control unit enables the parameters to be set easily and quickly.

## Integration

- The flexibility in programming the TE66 rotary table makes it very easy to integrate into various production lines.
- Manageable by an automation specialist in less than an hour.

## Various applications

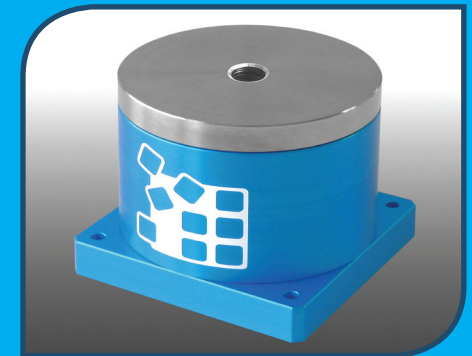
- The TE66 is ideal for automated or semi-automated workstations and can be used in various industries: watchmaking, microtechnology, medical industry or connection technology.

## High load

- In its high load version, the TE66 table can bear an axial load of up to 5,000 N.

## Option

- Central borehole with diameter 8 mm.



Technical data	TE66	TE66H
Dimensions Ø x H	Ø 62 x 59 mm	Ø 62 x 63 mm
Rotation flatness	15 µm	
Repeatability	± 5 "	
Precision	± 70 "	
Maximum speed	1600 rpm	
Torque (Nom / Peak)	0,2 / 0,55 Nm	
Maximum axiale force	120 N	5000 N
Interface	Digital I/O / Ethernet TCP	
Weight	0,6 kg	