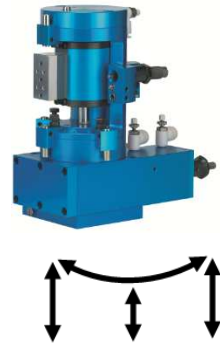


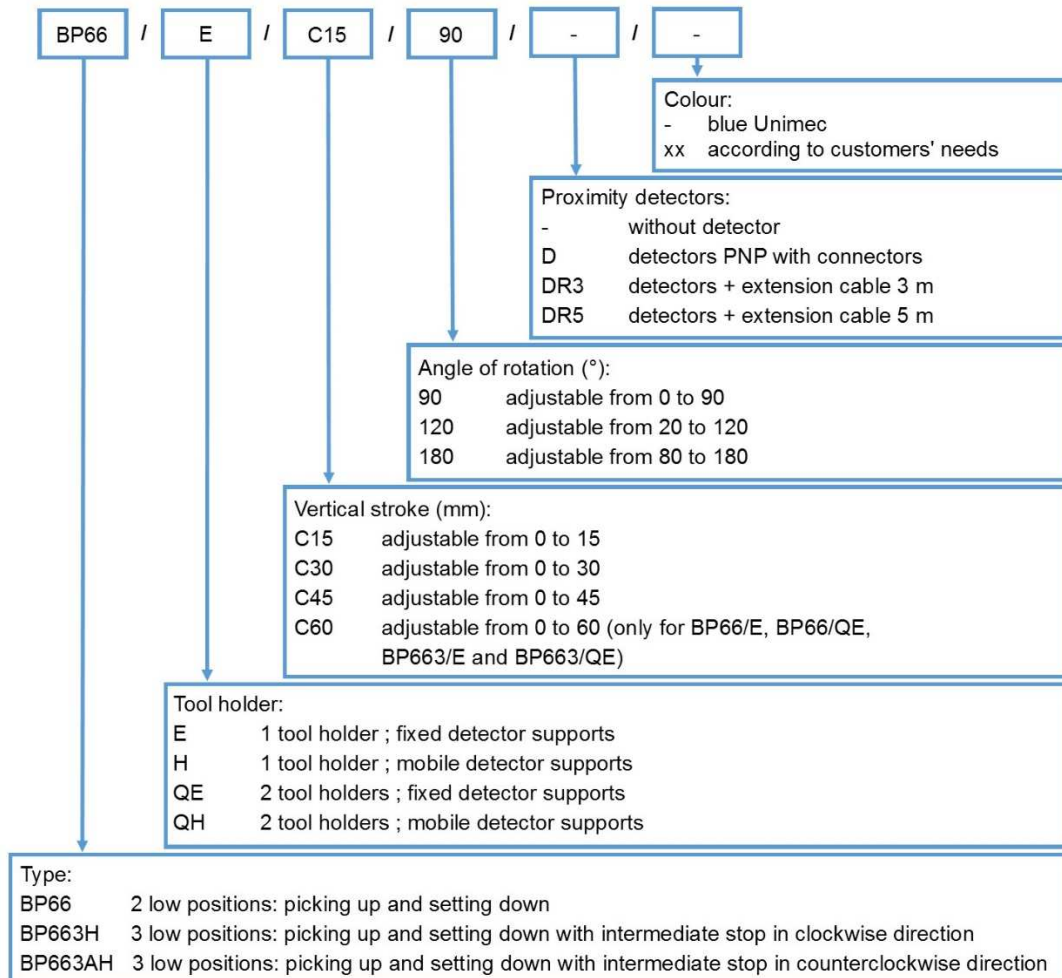
Pneumatic rotating transport arms BP663

Features

- Transport and assembly of different parts
- High speed and precision
- Repeatability of sequences
- Numerous application possibilities
- Independently adjustable picking up and setting down positions
- Independently adjustable movement speeds
- Hydraulic shock absorbers at the end of the rotation
- Carbide travel stops



To order these pneumatic rotating transport arms

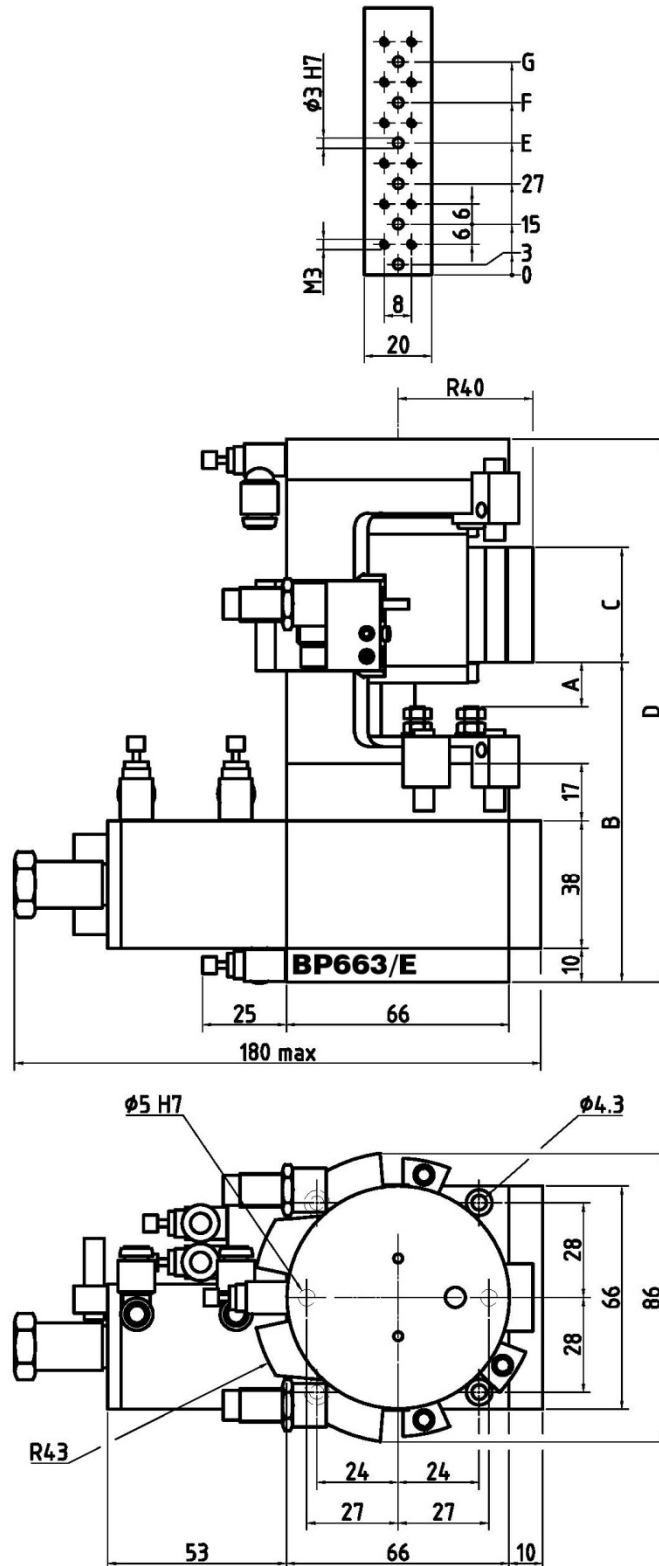


Technical data

Angular accuracy (")	15
Angular accuracy int. Stop (')	5
Load moment of inertia (kg.m ²)	0,008
Torque (N.m)	1,2
Vertical force (N)	150
Working pressure (bar)	3 - 6
Working rate (cycles/mn)	from 20 to 50
Net weight (kg)	2,2 and 2,6

Options

Positioning slides
Tool holders
Pressure and vacuum units



	A	B	C	D	E	F	G
BP663/E/C15	15	95	34	161	-	-	-
BP663/E/C30	30	110	49	191	39	-	-
BP663/E/C45	45	125	64	221	39	51	-
BP663/E/C60	60	140	79	251	39	51	63

