









Spare parts

Rotating transport arms BP100

	Article No.	Description	Complement	Pce/unit	Former article no.
	FJ-0100.020	Set of seals 1 rack	BP100/E/1	1	BP100E-J1
	FJ-0100.030	Set of seals 2 racks	BP100/E/2	1	BP100E-J2
	7001088	Slotted sleeve l= 24	BP100	5	BP66E-1014
	7020002	Internal shock-absorber (hard, 15.95)	BP100	1	BP100-AI
	7020033	Internal shock-absorber (medium, 15.94)	BP100	1	BP100-AI
	7020034	Internal shock-absorber (weak, 15.93)	BP100	1	BP100-AI



	7020003	Horizontal stop-screw	BP100	2	BP100E-H1
	7020027	Detector holder	BP100	2	
	7021039	Rack	BP100	1	BP100-1000
	7021038	Rack (full)	BP100/1	1	BP100E-1013
			BP100/2	2	
	7021056	Lardon de serrage	BP100	8	BP100E-1051
	7021060	M6 nut with thin screw thread	BP100		BP100E-1037
	FM-0400.020	Adjustable shock-absorber M12 FA 1210M	BP100	2	
	JSC6-01AT	Speed controller	BP100	4	





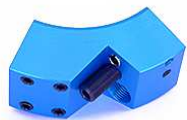
FM-1590.070 Ball bearing 10x30x9 BP100 1



FM-1590.230 Ball bearing 15x32x9 BP100 2



7020018 Sector left short BP100 180° 1 BP100E-SGCC



7020019 Sector right short BP100 180° 1 BP100E-SDCC



7020016 Sector left long BP100 90° and 120° 1 BP100E-SGLC



7020017 Sector right long BP100 90° and 120° 1 BP100E-SDLC



7020004 Vertical stop-screw L=40 BP100/C30 2 BP100E-V1



7020005 Vertical stop-screw L=70 BP100/C60 2 BP100E-V2



	7020006	Complete shaft C30	BP100/C30	1	BP100E-A30
	7020007	Complete shaft C60	BP100/C60	1	BP100E-A60
	7020011	Tool holder	BP100/C30	1	BP100E-QDA30
	7020012	Tool holder	BP100/C30	1	BP100E-QDA60
	FE-00330.010	Detector PNP with connector	BP100	5	
	FE-00330.020	5m-cable for detector	BP100	5	
	FE-00330.030	3m-cable for detector	BP100	5	

