

OUR BUSINESS SECTORS:

- MEASURING AND AGEING MACHINES
- ASSEMBLY AND MACHINING EQUIPMENT
- SUBCONTRACTING
- AUTOMATION UNITS



Watch video of the
product on the Internet



Dial feet welding

SEMI-AUTOMATIC EQUIPMENT FOR WATCH DIAL FEET WELDING



Dial feet welding

Equipment

This semi-automatic equipment is dedicated to welding of dial feet.

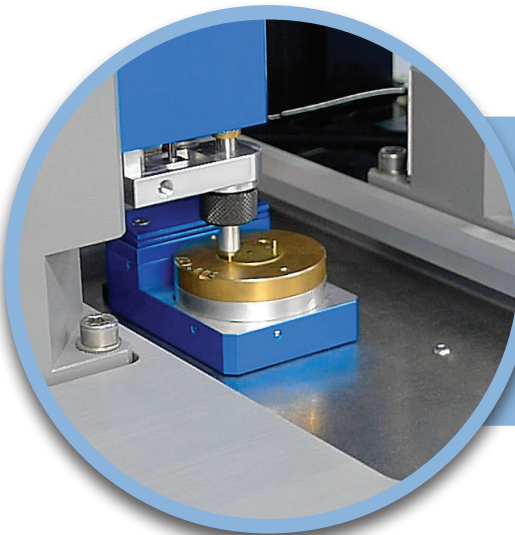
Three variants are available:

- semi-automatic: feet are supplied automatically; dial is loaded manually
- band welding: feet and dial are supplied automatically
- full-automatic : the feet and dials are fed automatically. The finished dials are stored in a drawer with trays

Functioning

This machine uses resistance welding technology.

A configurable servo-press enables the user to optimally control the pressure of feet on dial.



Precision

Positioning of feet is made thanks to a cross motorised table, which allows welding on every dial references with high precision (number of feet is not limited).

Programming

Equipment is run and controlled via a HMI especially developed for this application.

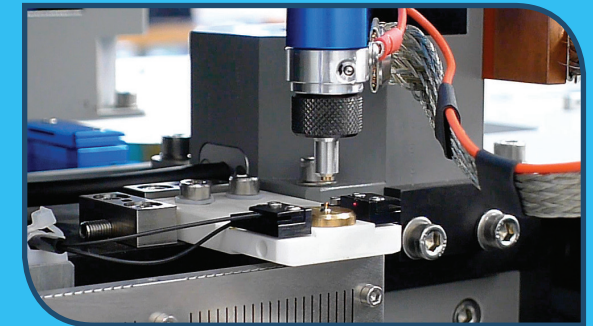
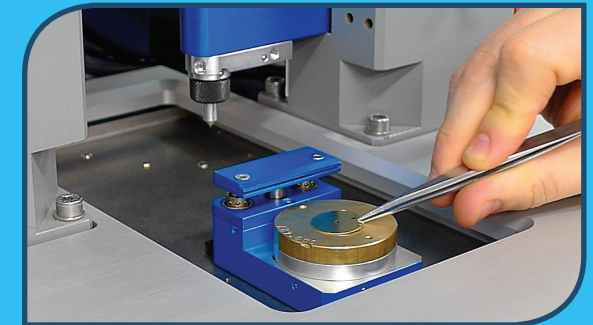
Welding profile is fully programmable: time, limit, double pulse, pressure force.

Voltage measure

Voltage measure during welding enables to detect welding defects and to prevent electrode damages or flashes.

Option

A device enables to disable the automatic supply of feet. This way it is possible to load them manually in order to make welding on prototypes or small-volume production.



Technical data

Peak	4 kA / 10 V / 25 kW
Welding programming	power / volt / intensity
Pressure force	from 0 to 50 N
Energy	230 V / 5 bars
Weight	340 kg
Dimensions (l x w x h)	1'605 x 815 x 1'850 mm