

## OUR BUSINESS SECTORS:

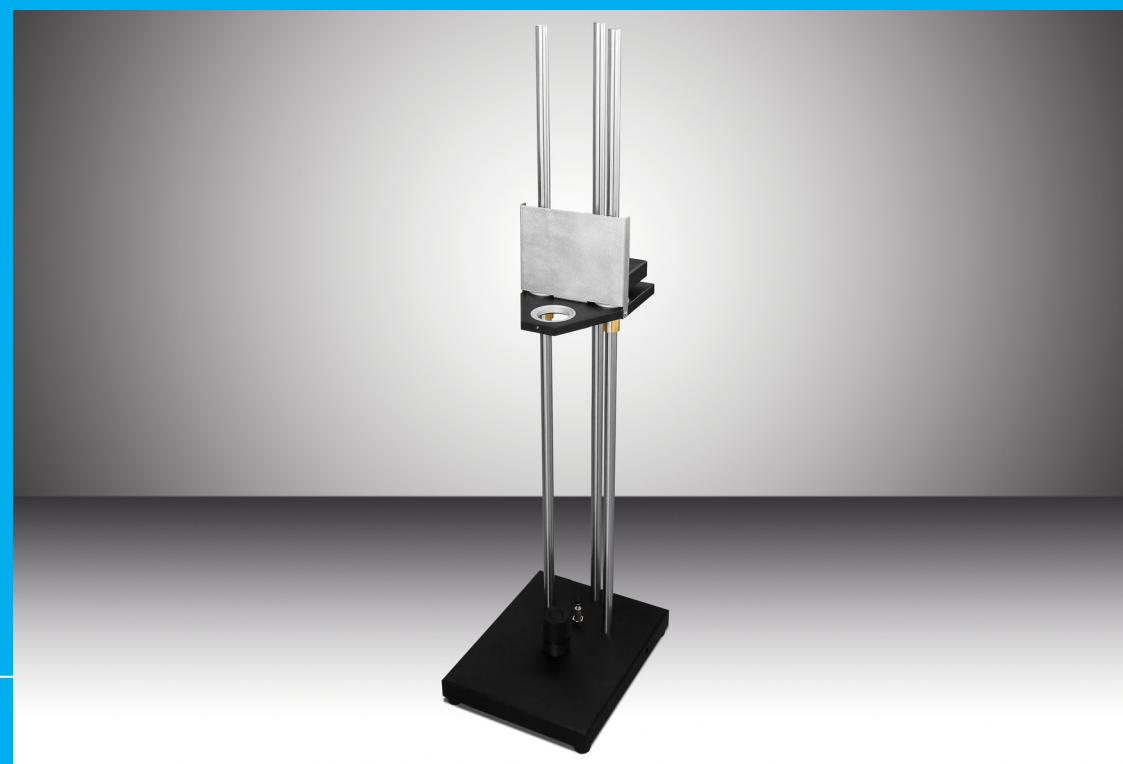
- MEASURING AND AGEING MACHINES
- ASSEMBLY AND MACHINING EQUIPMENT
- SUBCONTRACTING
- AUTOMATION UNITS

# Choc cadran 5000G

SHOCK TEST EQUIPMENT FOR WATCH DIAL

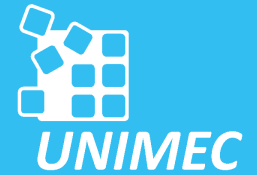


Find our product on the Internet



# Choc cadran 5000G

Shock test equipment for watch dial



## ■ *Equipment*

- This equipment can make tests of shock resistance on watch dials. It allows this way to check the holding of index during manufacturing process.

## ■ *Connection*

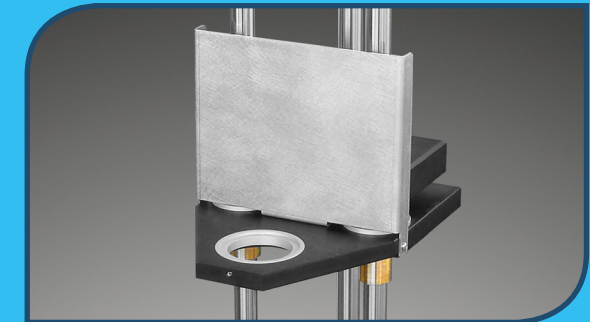
- This equipment does not need any electric or pneumatic connection.

## ■ *Flexibility*

- This equipment stands out by its simplicity of use and its flexibility. It allows to make required tests for production of dials with reliability and effectiveness.

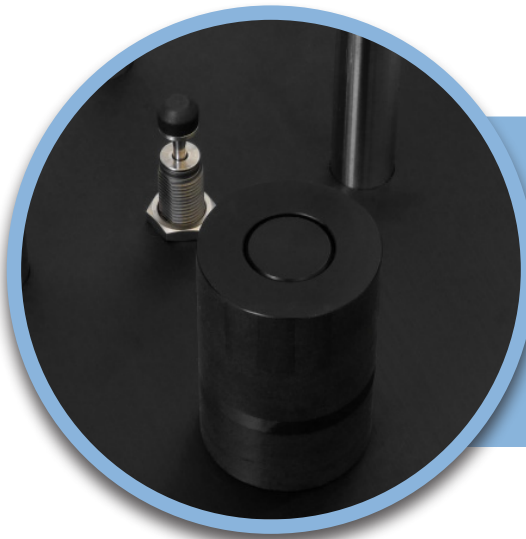
## ■ *Calibration*

- This equipment is calibrated at the factory with an accelerometer and delivered with a 5000G calibration certificate.



## ■ *Functioning*

The dial is placed on a shuttle driven by plain bearings. The test is performed by a gravitational fall of tested dial with the shuttle. Impact is performed on a Delrin surface.



## Technical data

Drop height	up to 1m
Impact surface	adjustable
Dimensions	350 x 280 x 1'200 mm
Weight	23 kg